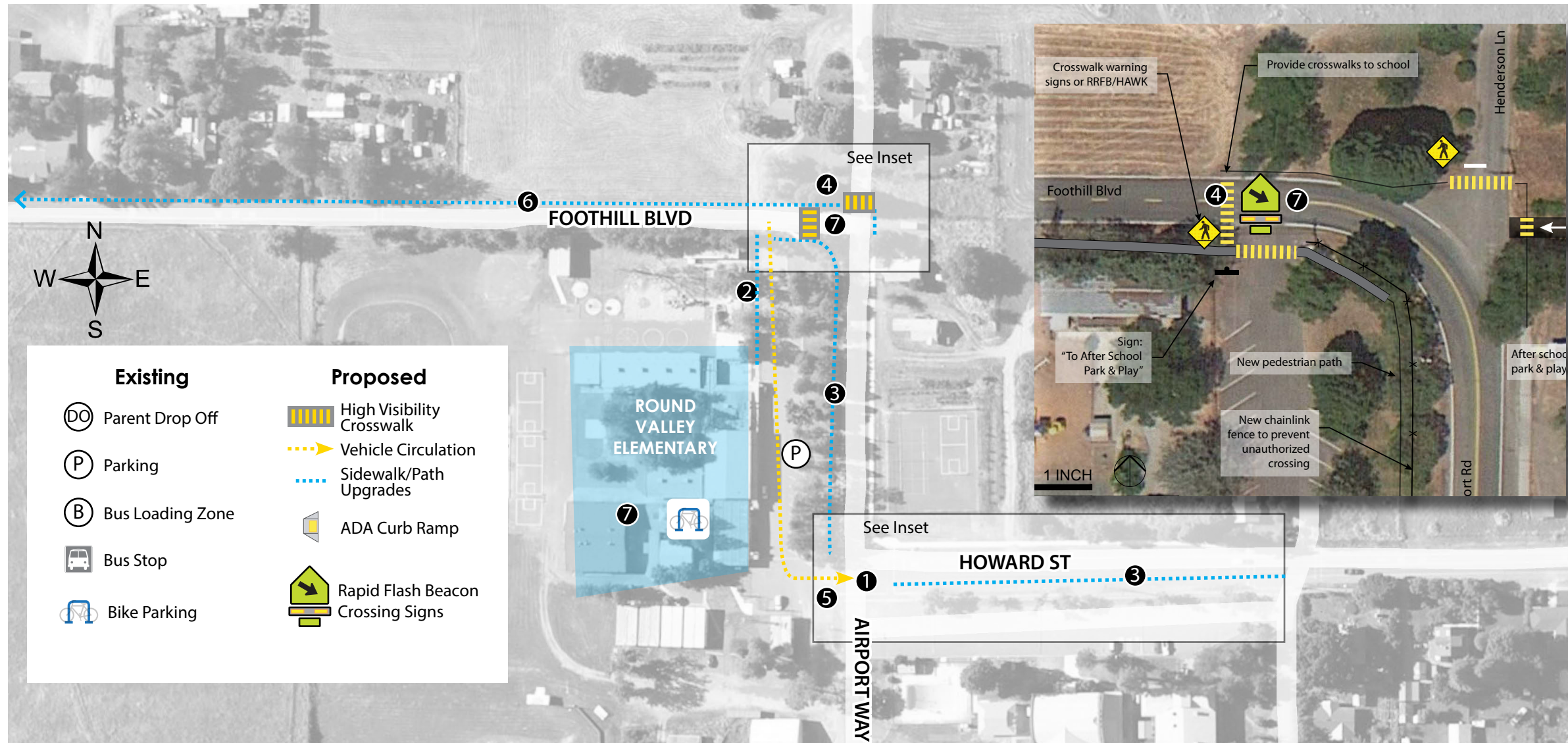


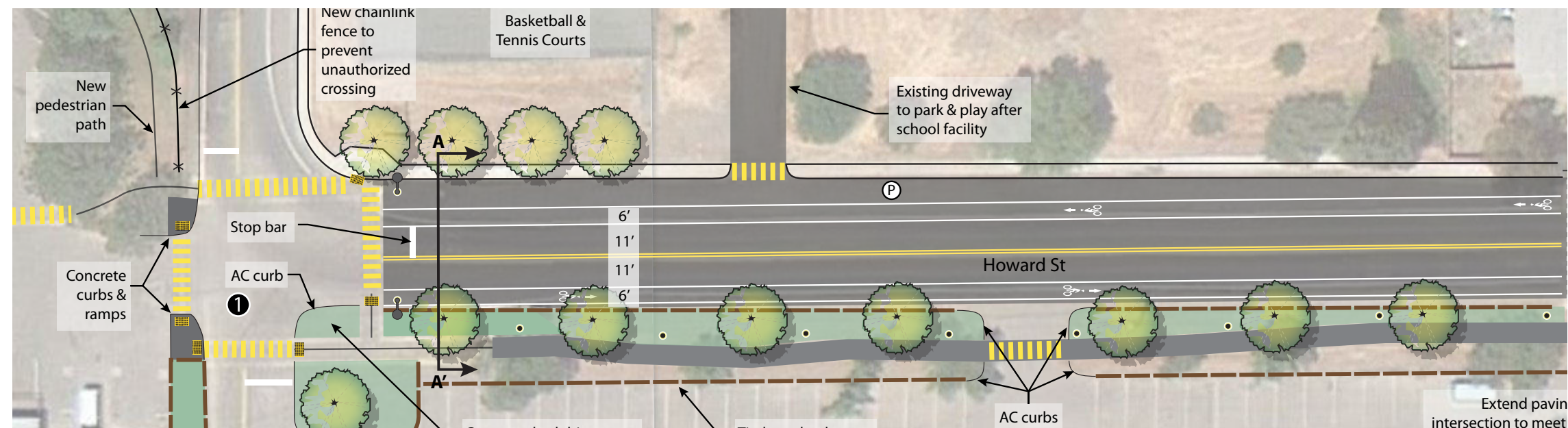
# ROUND VALLEY ELEMENTARY

## Round Valley Unified School District Infrastructure Recommendations

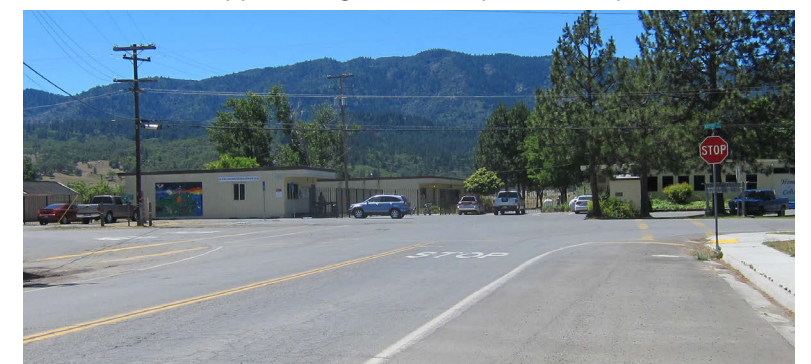


- 1 Reconfigure the intersection of Howard St and Airport way to channelize vehicular movements and provide crosswalks for pedestrians as detailed in the Covelo/Round Valley Non-motorized Needs Assessment & Engineered Feasibility Study.
- 2 Reconfigure the parking area to provide a pedestrian walkway between the school and pathway. The parking area is currently 60 feet wide (18 feet parking/24-foot aisle/18 feet parking). It could be marked as a one-way entry and narrowed to create an eight-foot walkway on the west side of the parking area.
- 3 Install sidewalk along Airport Road and along the south side of Howard St. as detailed in the Covelo/Round Valley Non-motorized Needs Assessment & Engineered Feasibility Study.
- 4 Install an enhanced crossing of Foothill Blvd and the northern school driveway entrance to connect with the trail as detailed in the Covelo/Round Valley Non-motorized Needs Assessment & Engineered Feasibility Study.
- 5 Prohibit vehicle entry to the school driveway at Howard Street/Airport Road; Require entrance from the driveway at Foothill Blvd.
- 6 Install sidewalk on the north side of Foothill Blvd to connect with Crawford Road. Purchase right of way and shift driveway entrances and fences to the north.
- 7 To improve yielding and manage visibility of the new crosswalk across Foothill Blvd, install a Rectangular Rapid Flash Beacon (RRFB) at the crossing, and install an advance RRFB around the corner to alert approaching cars to the presence of pedestrians.

### 1 Airport Rd & Howard St



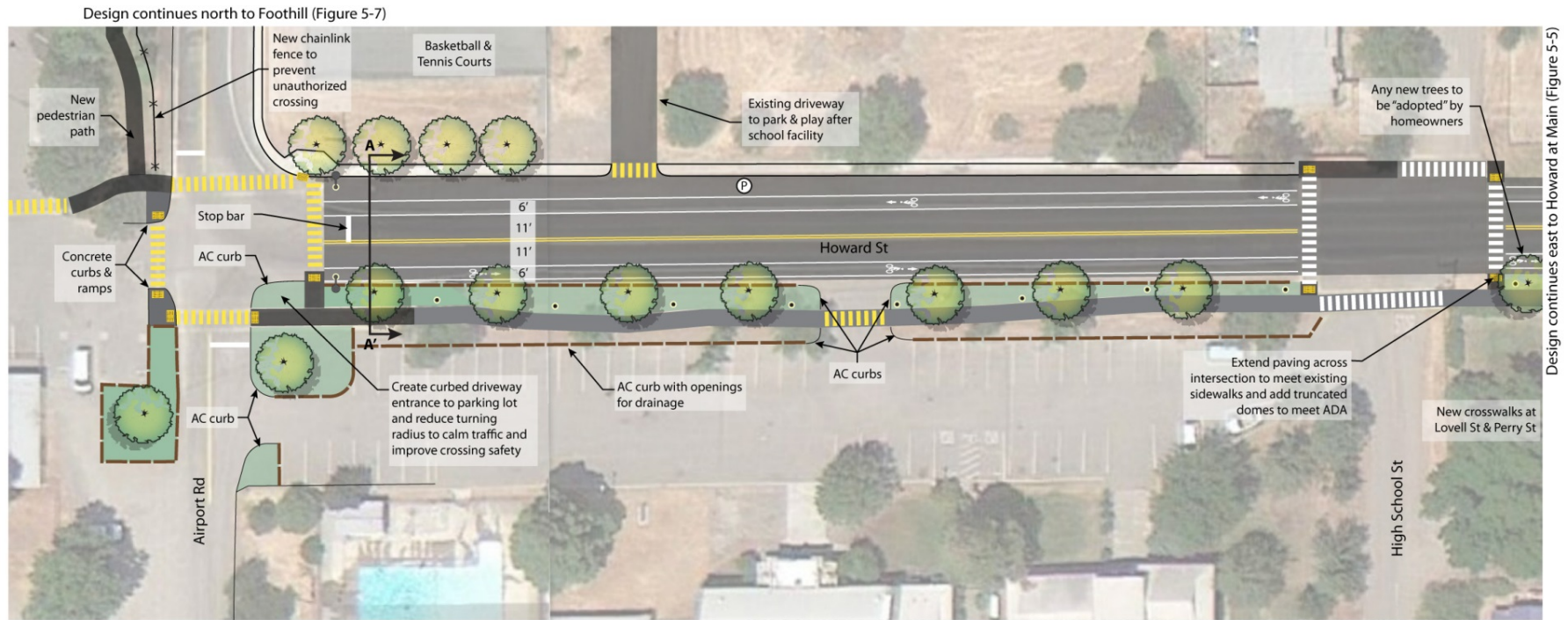
From Covelo/Round Valley Non-Motorized Needs Assessment & Engineering Feasibility Study.



Reconfiguration can bring increased structure and clarity to driveways and pedestrian paths at the intersection of Airport Rd & Howard St.



# Covelo/Round Valley Non-Motorized Needs Assessment & Engineered Feasibility Study



Key to Howard Street Sheets

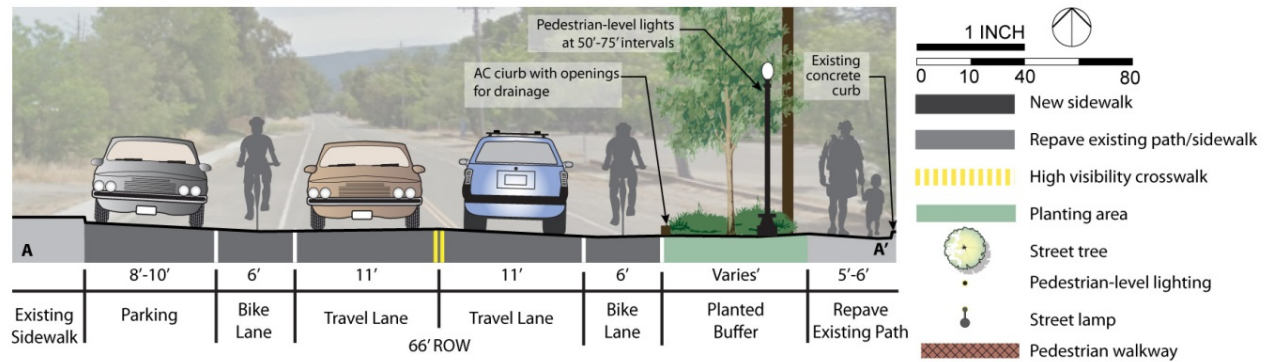
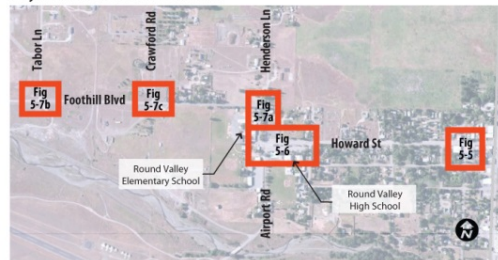


Figure 5-6: Howard Street at Airport Road

Figure 5-7a: Foothill at Airport Road

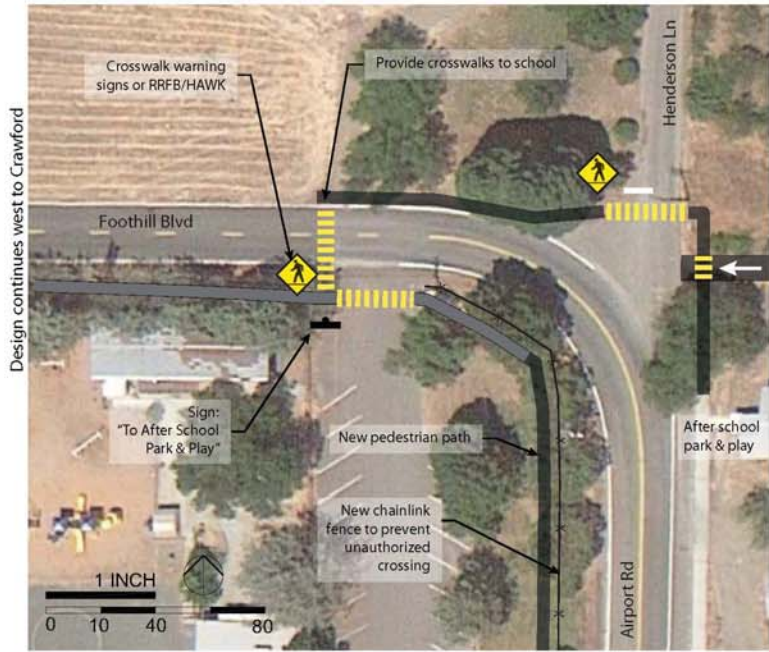







Figure 5-7b: Foothill at Tabor



Figure 5-7c: Foothill at Crawford



-  New sidewalk
-  Repave existing sidewalk
-  High visibility crosswalk
-  Pedestrian-level lighting
-  Street lamp

Key to Howard Street Sheets



Foothill (Existing, typ.)

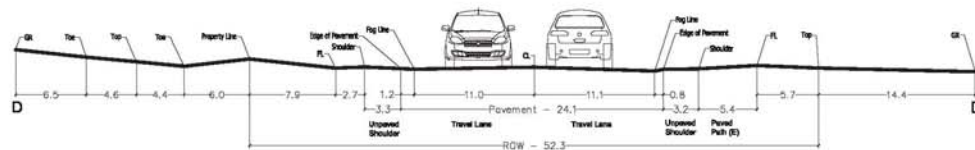


Figure 5-7: Foothill Boulevard